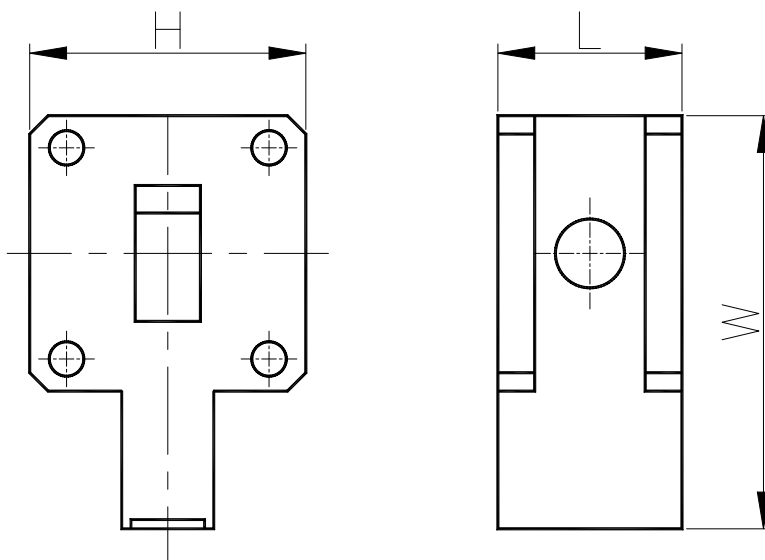


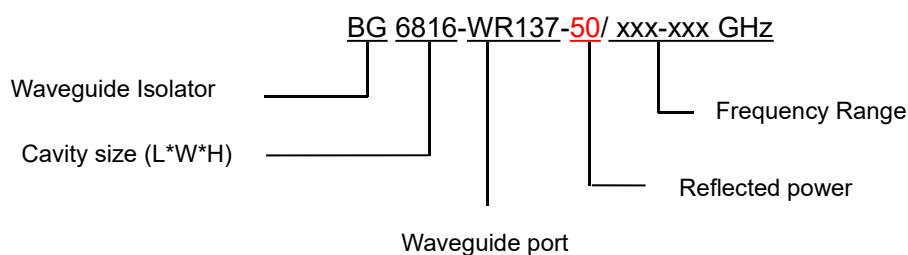
## 5.4-8.0GHz Waveguide Isolator

BG6816-WR137

Outline Drawing (mm): 



Order Examples:



Basic Specifications:

Impedance	50 $\Omega$
Connector Type	WR137
Size(mm)	160*68.3*49.2 (As shown in the figure)
Operating Temp	-40~+80 $^{\circ}\text{C}$

### Specifications:

Model No. (X=1: →Clockwise) (X=2: ←Anticlockwise)	Freq. Range GHz	bandwidth	IL. dB (max)	Isolation dB (min)	VSWR (max)
BG6816-WR137/5.4-8.0GHz	5.4-8.0	20%	0.30	23.0	1.20

### Instructions:

1, If you do not have the frequency you want, please contact us!