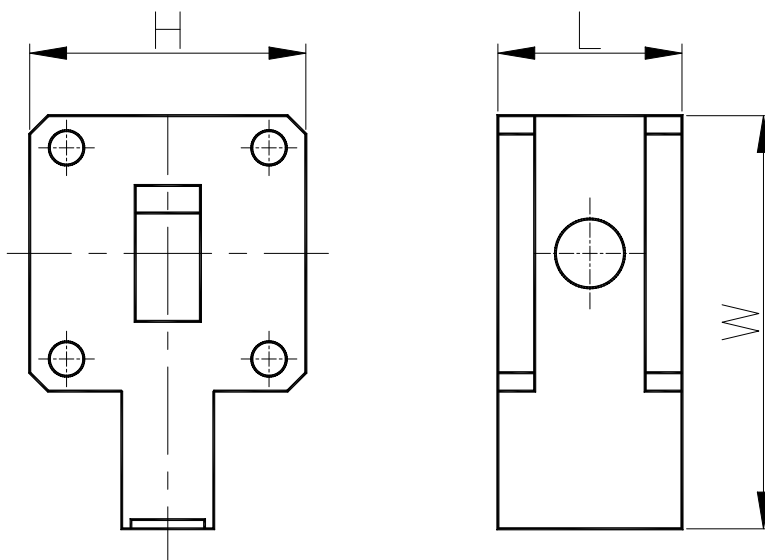


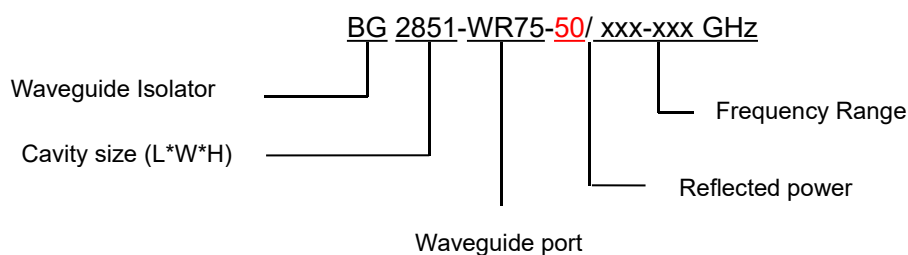
## 10.0-15.0GHz Waveguide Isolator

BG4457-WR75

Outline Drawing (mm): 



Order Examples:



Basic Specifications:

|                |   |
|----------------|---|
| Impedance      | 50 Ω                                    |
| Connector Type | WR75                                    |
| Size(mm)       | 57.1*44.5*38.1 (As shown in the figure) |
| Operating Temp | -40~+80 °C                              |

### Specifications:

| Model No.<br>(X=1: →Clockwise)<br>(X=2: ←Anticlockwise) | Freq. Range<br>GHz | bandwidth | IL.<br>dB (max) | Isolation<br>dB (min) | VSWR<br>(max) |
|---|--------------------|-----------|-----------------|-----------------------|---------------|
| BG4457-WR75/10.0-15.0GHz                                | 10.0-15.0          | 500M      | 0.30            | 23.0                  | 1.20          |
| BG4457-WR75/10.7-12.8GHz                                | 10.7-12.8          | FULL      | 0.25            | 25.0                  | 1.15          |
| BG4457-WR75/10.0-13.0GHz                                | 10.0-13.0          | FULL      | 0.40            | 20.0                  | 1.25          |

### Instructions:

1, If you do not have the frequency you want, please contact us!