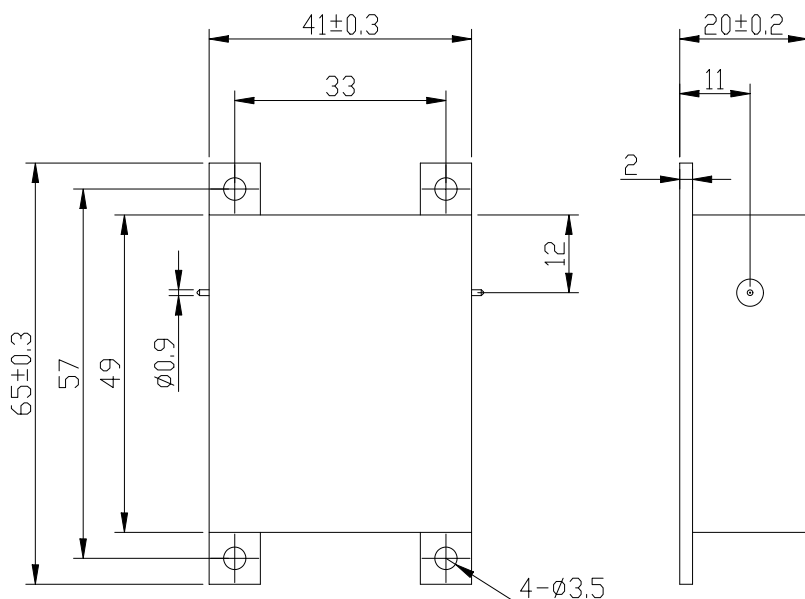
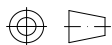


## 300 to 1000MHz Drop in Isolator

### WG4149A Drop-In Type

#### Outline Drawing (mm):



#### Features:

- ◇ Good temperature stability
- ◇ Withstand high power
- ◇ RoHS compliant
- ◇ Weight :  $\approx 360$  g

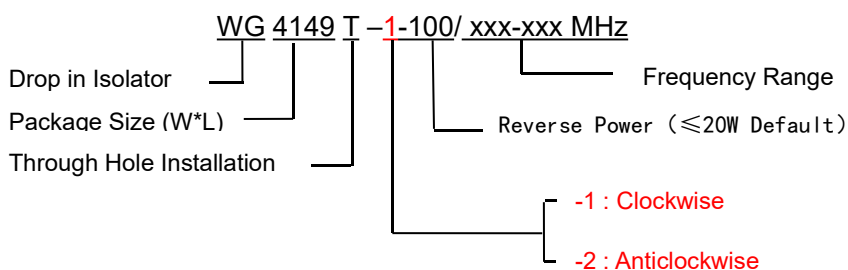
#### Material list:

- ◇ Shell: Steel  
Coating: Bright Nickel
- ◇ Inner conductor: Brass  
Coating: Silver

#### Application:

- ◇ Protect the power amplifier and  
Installed at the end of RF power  
amplifier
- ◇ Transceiver common antenna
- ◇ GSM1800/CDMA/TD-SCDMA/WCD  
MA/EGSM/Wimax/TD-LTE/AMPS/S  
MR 5G and other communication  
systems

#### Order Examples:



#### Basic Specifications:

Impedance	50 $\Omega$
Size(mm)	41.0*49.0*20.0mm
Operating Temp	-30~+70 $^{\circ}$ C/-40~+85 $^{\circ}$ C
Storage temperature	-50~+90 $^{\circ}$ C

Specifications:

Model No. (X=1: →Clockwise) (X=2: ←Anticlockwise)	Freq. Range MHz	IL. dB (max)	Isolation dB (min)	VSWR	Forward Power CW	Reverse Power W	Remark
WG4149A-X/300-475MHz	300-475	0.80	18.0	1.35	100	20	+25±5℃
		1.00	16.0	1.40			0~+60℃
		1.20	14.0	1.60			-40~+85℃
WG4149A-X/400-600MHz	400-600	0.60	20.0	1.25	100	20	+25±5℃
		0.70	18.0	1.30			-10~+60℃
WG4149A-X/600-1000MHz	600-1000	1.00	16.0	1.40	100	20	-10~+60℃

**ADDED:**

1. This model isolator could be made into a coaxial isolator with both SMA-male or SMA-female connector, which could be used in combination with customer requirements;
2. The reverse power max is 20W;
3. The table only shows some commonly used frequencies, which can be produced according to customer requirements;
4. If you cannot find what you are looking for, please contact us!